

Implanted RFID Animal Microchip-spec sheet



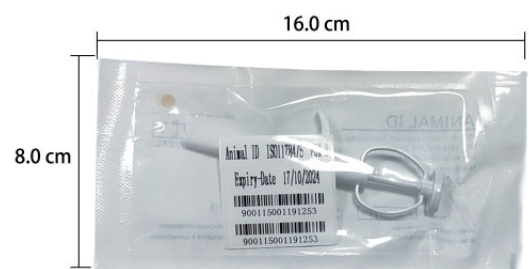
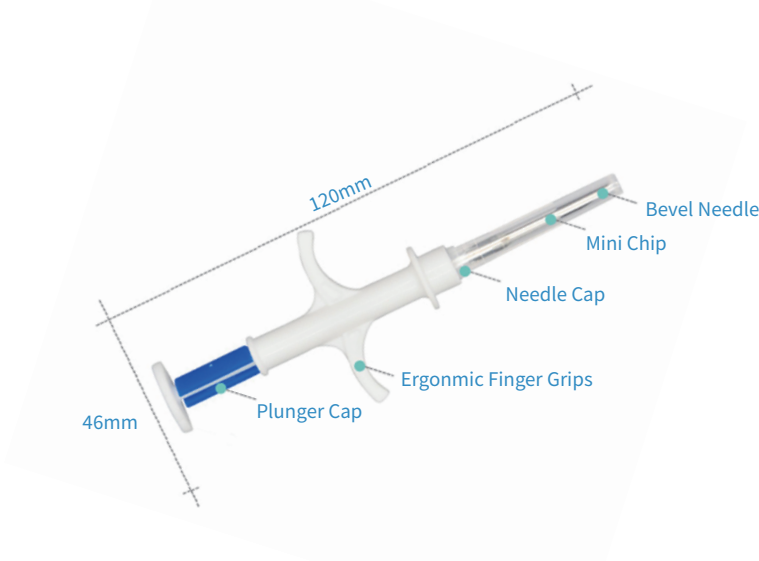
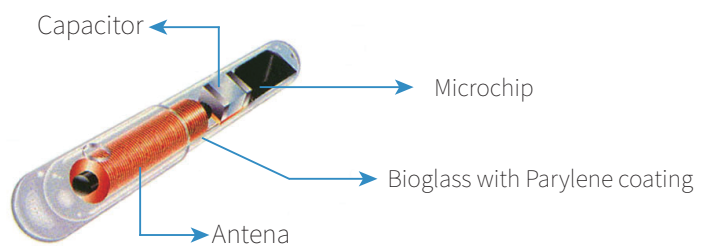
RFID Animal Microchip may be a special design for animals like pets or wildlife. It is often anesthetized animals' skin by a special syringe or via surgery. Also, it is often embedded in objects easy for extreme conditions because it's a high resistance glass tube.

The microchip may be a simple safe and quick procedure. It can make all the difference in being reunited together with your pet should they stray or go missing. The microchip is that the size of a grain of rice and therefore the procedure, which may be administered by a vet or trained implanter, takes only a couple of minutes and lasts a lifetime.

Parameters

Item	Implanted RFID Animal Microchip	Frequency	125 KHz/134.2 KHz	Working Temperature	minus20 °C~50°C; storage temperature:-40 °C~70°C
Material	Bioglass with Parylene coating	Protocol	ISO11784/785 FDX A/B, HDX	Write Endurance	more than 20 years;rewritable times: more than 1000000 times
Chip	EM4305 or Customized	Reading distance	0-10cm	Size	1.5×8, 2×6, 2×8, 2×10, 2×12, 3×13, 3.85×23, 3.85×32, 4x34mm.etc

Dimensional Diagram



Feature

- ▶ Unique identity for every livestock and pet
- ▶ Anti-bacterial
- ▶ Import and export control
- ▶ Suitable for use in extreme conditions
- ▶ Lost pet can be easily traced back to it's owner
- ▶ Veterinarians are able to keep the animal's health record
- ▶ Easily implanted and no impact on the animal

Available chips

LF 125kHz Chips

Chip Name	Protocol	Capacity	Frequency
TK4100	ISO 11784/11785	64 bits	125 kHz
EM4200	ISO 11784/11785	128 bits	125 kHz
EM4305	ISO 11784/11785	512 bits	125 kHz
T5577	ISO 11784/11785	330 bits	125 kHz

APPLICATIONS

- animal pet Identification
- dog management
- Companion animal health record management
- cat management
- Lost pet tracking